

# Chelmsford HC News Bulletin



@ChelmerPark



Chelmsford Hockey Club



Issue Number 39

23<sup>rd</sup> November 2012

[www.chelmsfordhc.org.uk](http://www.chelmsfordhc.org.uk)

## Fixtures @ Chelmer Park

24/11 - M1, M5, MEG, L1, L2,  
L3 & L5

25/11 - L2

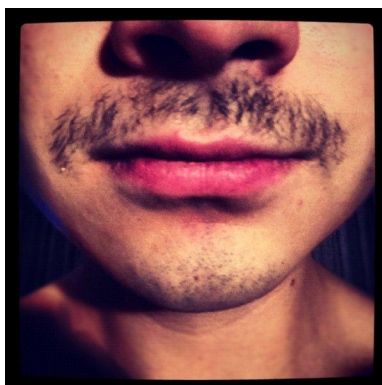
FACE GROWN & HAND BRUSHED

# MOVEMBER



During November each year, Movember is responsible for the sprouting of moustaches on thousands of men's faces in the UK and around the world. The aim of which is to raise vital funds and awareness for men's health, specifically prostate cancer and testicular cancer.

This Men's face is Richard "Little" Nourse! To sponsor him and his vomit inducing moustache [click here!](#)



## Club Member Notices

Subs - For the minority of players who have not yet paid your subs then you do run a serious risk of non-selection if these are not forthcoming ASAP, all details can be found on the [website](#) where the penalty rate is now due (save for new members awaiting election) or by contacting [Peter Carter](#).



1<sup>ST</sup> DECEMBER 2012 - SELECTION OF WHISKIES FROM THE "HUNTER COLLECTION" AND A FANTASTIC SPREAD OF FOOD WITH A SPIN ON SCOTTISH FOOD. TICKETS ARE AVAILABLE FROM [IAN HUNTER](#) AT £30 FOR TASTING AND BUFFET AND £5 FOR BUFFET ONLY.

[CLICK HERE](#) FOR FULL POSTER & MENU.

## Results 17/11/12

M1s v St Albans 1	(L)	Drew 2-2	Hunter A, Goode
M2s v Royston 1	(L)	Lost 0-5	
M3s v Saffron Walden 3	(L)	Drew 3-3	Galbraith x2, Tuff
M4s v Romford 2	(L)	Drew 1-1	Fergus
M5s v Harlow 2	(L)	Lost 4-0	
MVs v St Albans	(L)	Won 4-2	Gill, Cass x2, Wooding
L2s v Broxbourne	(L)	Lost 2-1	Morley
L3s v Redbridge & Ilford 1	(L)	Lost 5-3	Smith E x2, Blair
L4s v Redbridge & Ilford 3	(L)	Lost 1-2	Daden
L5s v Witham 3	(L)	Lost 0-1	

## Results 18/11/12

L1s v Old Loughts 1	(L)	Lost 1-0	
U18 Boys v West Herts U18	(P)	Lost 4-3	
U18 Girls v Havering U18	(P)	Won 5-0	

## ONESIE NIGHT (OPTIONAL)...THIS SATURDAY!

This Saturday is unofficial social night at CHC, instigated by the Ladies and with so many teams at home this week it is swiftly spreading and open to one and all. The Men (not to be outdone!) are having a "onesies night", obviously this is optional and you will still be very welcome in normal clothes!!

The plan!! - To stay up at the club after the games and then head into town later on!! It would be great to see you there, for all or part of the night, the more the merrier!



Newsletter to be printed for Clubhouse & New Build notice boards so please let any of your less technically minded friends know!!!

To receive bulletins direct to your inbox along with important club information subscribe to the [mailing list](#).

If you've got any comments, suggestions for future articles, announcements or just generally any questions then please drop us an email at [newsletter@chelmsfordhc.org.uk](mailto:newsletter@chelmsfordhc.org.uk).  
**Kat & Anna**

## Chelmsford Chumps! - Don't forget to tell us who's been a chump!

**Spencer Wilcox, our Chairman** - This is not for the offence itself but more for the "group discussion" that followed in the Clubhouse after the game! So to fill you in on the story - Spence was umpiring the M3's v Saffron Walden at the 3.45pm slot on the water, a free hit was awarded to Walden, just inside the attacking 23m and they proceeded to pull the ball back over the 23m line and straight into the 'D' for one of their forwards to score. Now, newly appointed umpire, Jason "gobby" Evans was playing for the 3's and queried the decision with Spence claiming that the ball did not travel 5m before entering the "D". Anyway, after a conflagration with other umpire Bunny, the goal stood and the "debate" carried on in the clubhouse with beers in hand! We tried to get hold of Andrew "Spesh" Kennedy to settle the squabble, who is currently on Champions Trophy duties in Australia, but sadly he was unavailable for comment. However Spence pursued this during the week and received this statement from Spesh **"Definitely no goal! Jason is correct. Taking it outside of the 23m does not mean the ball doesn't have to travel 5m"**. So that settles it, Jason narrowly avoided the Chelmsford Chump list but for how long...?

**Adam Hunter & Jonny Wilcox** - For being vociferous supporters of "Team Spence" with regards to the above, not "Team Evans"! There were more in support of Spence & Bunny but unfortunately one Newsletter writer has a memory like a sieve and the other had drank a few too many beers...I'll leave it for you decide who is who!

**CHRISTMAS PARTY TICKETS NOW AVAILABLE FROM BECCA BUDD & YOUR CAPTAINS, £4 ONLY**  
WHICH INCLUDES HOT DOG & MINCE PIE!

[CLICK FOR POSTER!](#)



## Top Scorers & Serial Offenders

### Announcements

*This Section will be for births, engagements, birthdays, marriages, deaths, hockey honours etc – but remember you have to let us know what's going on!*

- ◇ Congratulations to Owen, Fi and Abi Thom on the birth of Emilia Lily Jennie Thom born on 16<sup>th</sup> November weighing 7lb 2oz.
- ◇ Well done to CHC girls U10's for a second win to date, they've got a taste for winning now!

By itself, last weekend doesn't offer much to write about. A total of fifteen goals is one of our lower collective efforts and four cards don't highlight an excessively violent weekend either. However, the bulk of this weeks report will come from retrospective reporting...to read more [click here](#).



CHC Ladies 2's play host to Bromley & Beckenham 2's in the second round of the 2<sup>nd</sup> XI Cup. As an incentive (!!) they have been informed by Georgia Herron, who is currently taking a sabbatical from CHC to attend Nottingham Uni, that if they beat BromBeck they will be playing against her at Beeston HC!

### 2012/13 - Social Calendar ...so far!

1 <sup>st</sup> Dec	18 <sup>th</sup> Whisky Tasting Night
7.30pm	
8 <sup>th</sup> Dec	Curry Night
15 <sup>th</sup> Dec	Christmas Party - Late Licence
12 <sup>th</sup> Jan	Pizza Night
18 <sup>th</sup> Jan	Beer Festival!!!
19 <sup>th</sup> Jan	Live band in evening!
20 <sup>th</sup> Jan	Sunday recovery beers!
9 <sup>th</sup> Feb	Chinese Night
9 <sup>th</sup> Mar	Curry Night
22 <sup>nd</sup> Mar	Men's Dinner - Late Licence
28 <sup>th</sup> Mar	Ladies Night - Late Licence

### FRIENDS OF CHC WINE & CHEESE PARTY NIGHT



Certain members of the Men's Evergreens, having got wind of a potential change of club kit, decide to hold a fashion show and model some alternative colours for club shirts at the unveiling of the "Evergreens on Tour" display case in the clubhouse during the recent Friends Wine & Cheese party.